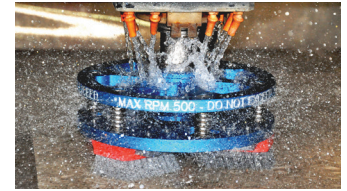
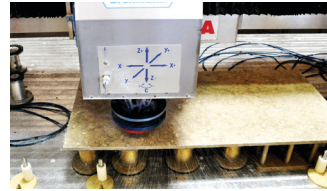
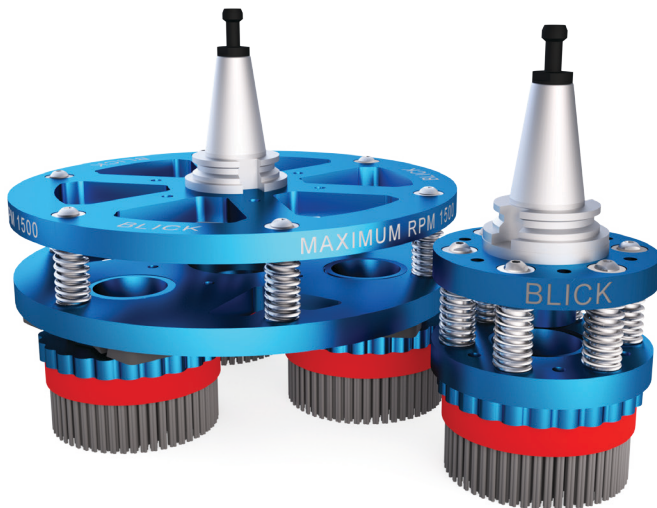


Leatherheads & Accessories

Use your CNC router or CNC bridge saw to leather your stone!

The Leatherhead (14-500-03) **Leatherhead Mini** (14-500-04)



Product Info

- ▶ Adapt to any 35 mm conic tool holder
- ▶ Can be used on belt driven and electro-spindle machines
- ▶ Accepted Brush Styles:
 - I. **The Leatherhead** - Frankfurt-style brushes, 4" and 5" Snail Lock brushes
 - II. **Leatherhead Mini** - 4" and 5" Snail Lock brushes
- ▶ Leatherhead Mini fits into most tool racks



Product Name	The Leatherhead	Leatherhead Mini
Part Number	14-500-03	14-500-04
Tool Diameter	324 mm (12.75")	140 mm (5.5")
Tool Weight	~16.5 lbs.	~4 lbs.
Overall Length	67 mm (2.625")	
Adaptor Type	35 mm Conic Tool Holder	

NEW! from BLICK INDUSTRIES

1/2" Gas Adaptor

for The Leatherhead

Use The Leatherhead on a 5-axis saw with the BLICK INDUSTRIES 1/2" Gas Adaptor.

The adaptor is available in Left-handed (tightens by turning counter-clockwise) and Right-handed (tightens by turning clockwise) threading.

Left-handed Threading	14-101-11
Right-handed Threading	14-101-10
Tool Weight	1 lb.
Tool Height	76.2 mm (3")
Arbor Diameter	35 mm

